



บริษัท โคโตบุกิ ได คาสติง (ประเทศไทย) จำกัด
KOTOBUKI DIE CASTING (THAILAND) CO., LTD.



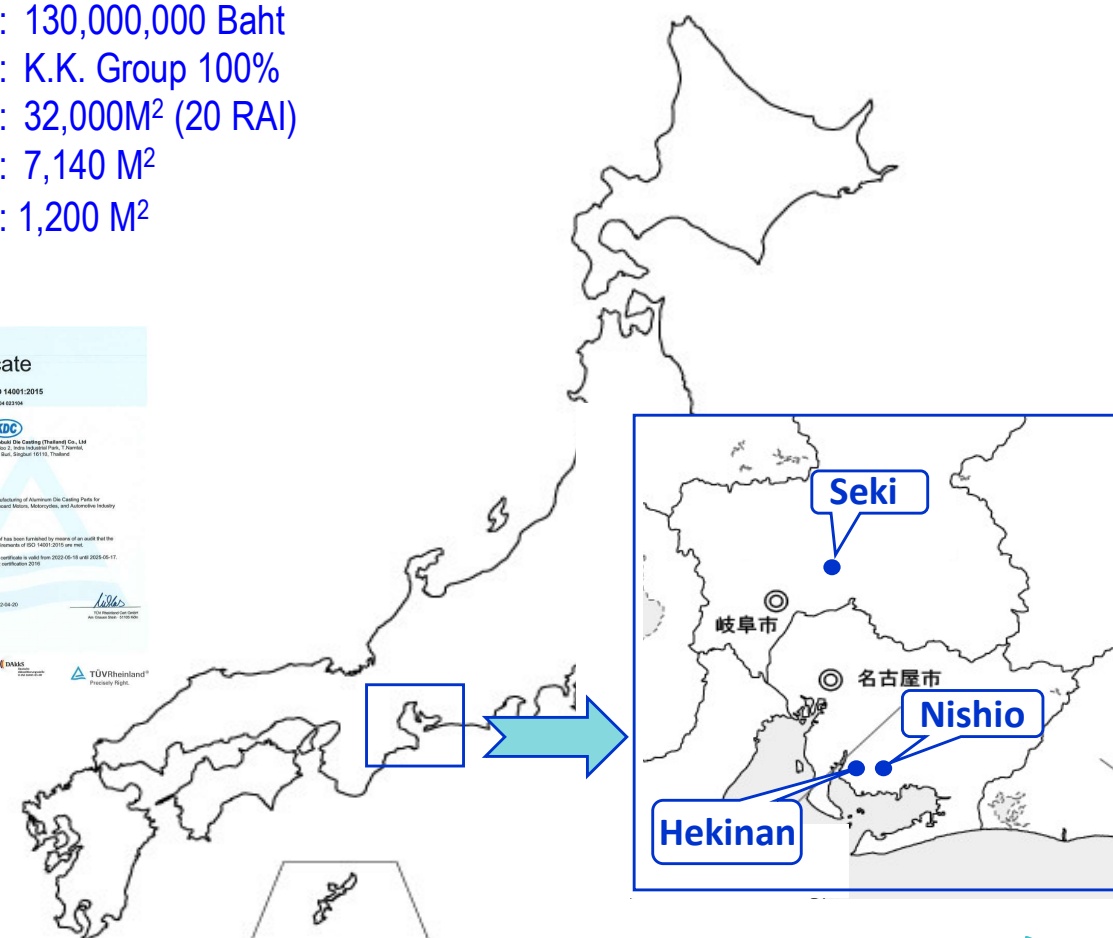
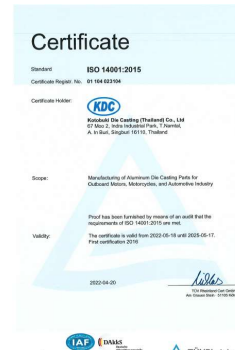
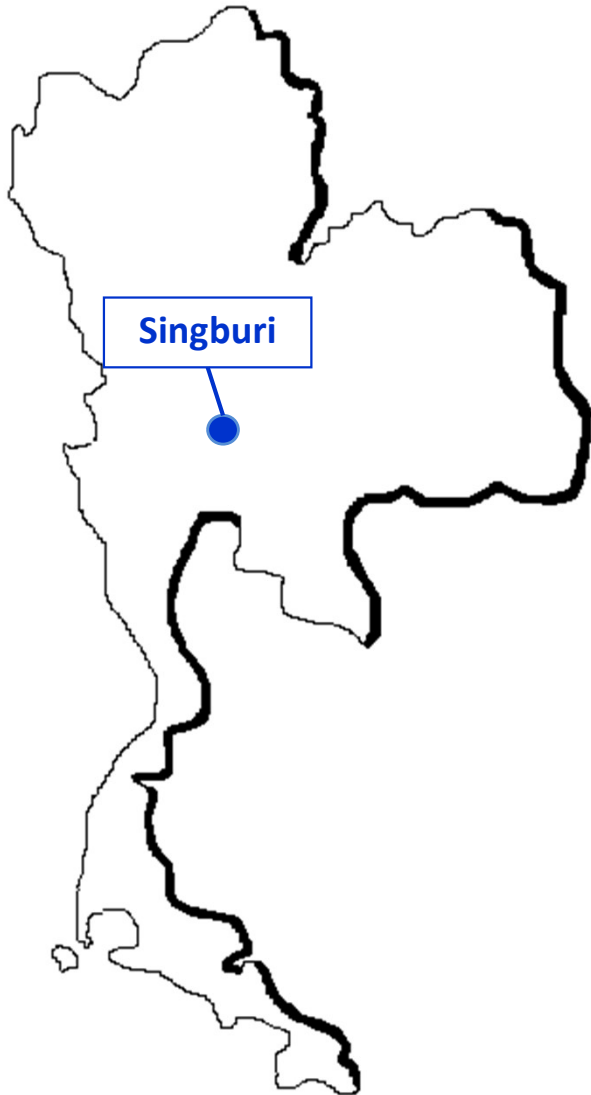
History



Address : Indra Industrial Park 67 Moo 2 T. Namtal A.Inburi Singburi 16110

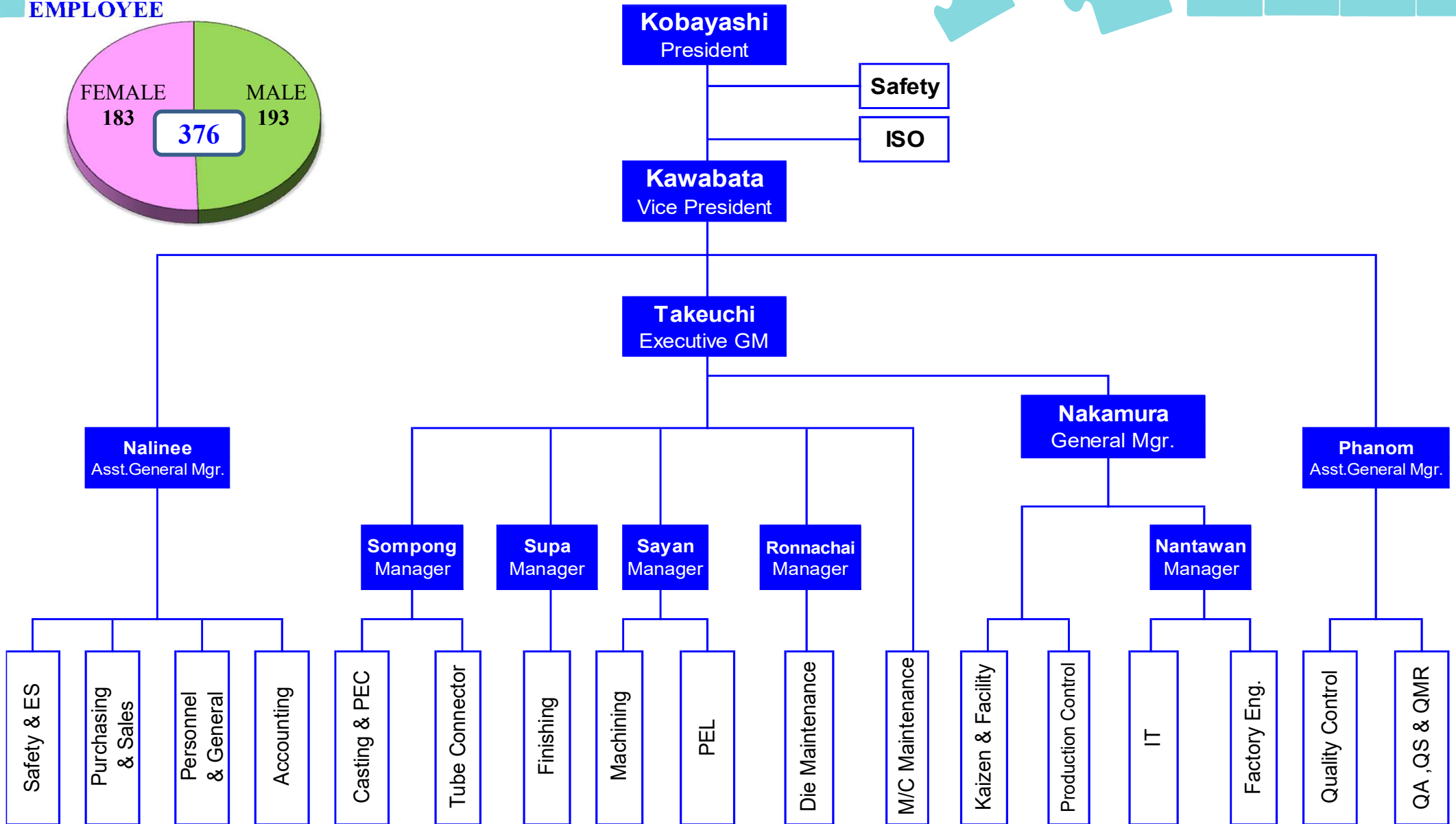
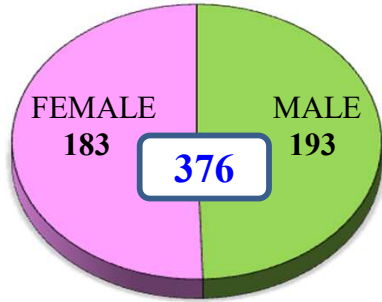


Establishment : September 1996
Production Starter : June 1997
Capital : 130,000,000 Baht
Share Holder : K.K. Group 100%
Area of Site : 32,000M² (20 RAI)
Building : 7,140 M²
New Warehouse : 1,200 M²



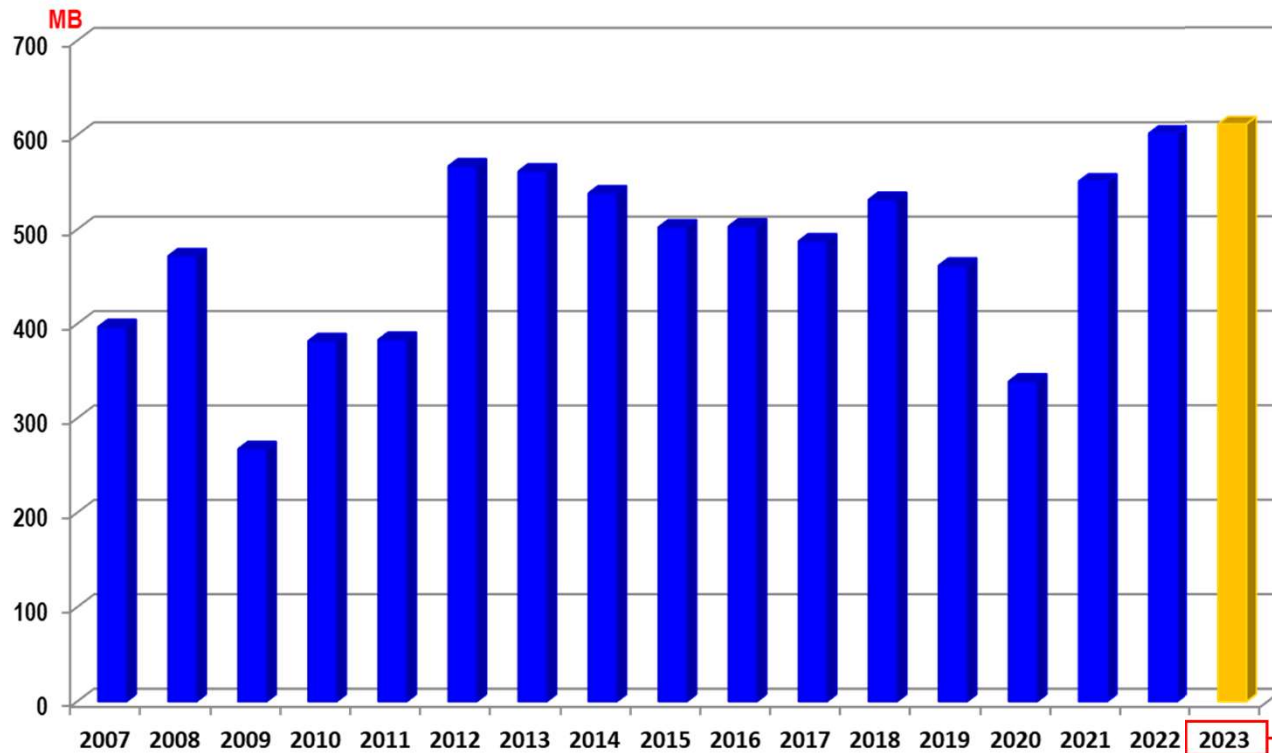
Organization

EMPLOYEE



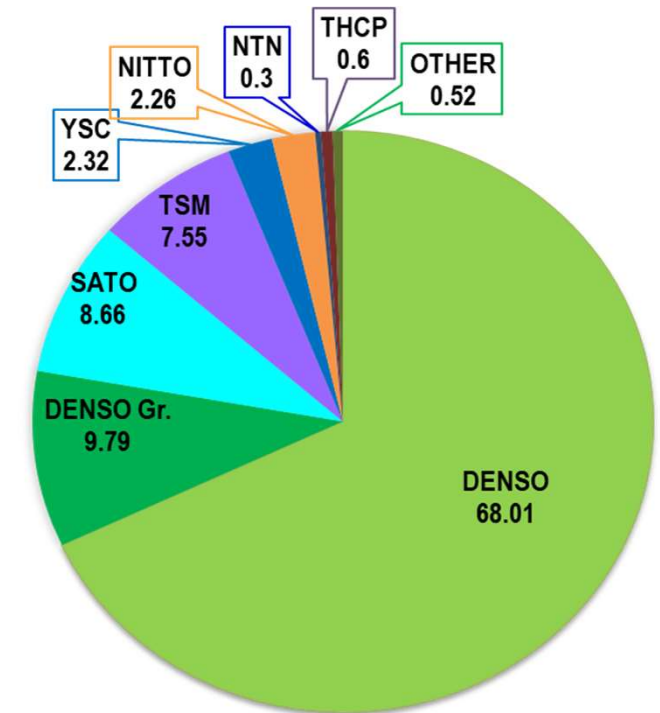
Sales Information

Sales Turnover



- 2009 * Global Financial Crisis
- 2011 * Japan Earthquake Disaster & Thailand floods
- 2020 * Virus Covid-19

Sales Ratio 2022 (Jan-Dec)



Y2023 is forecast only

Equipment

◆ Die Casting Machinery

- 135 Ton 5 Units
- 350 Ton 12 Units
- 500 Ton 1 Unit
- 650 Ton 2 Units

◆ Melting & Holding Furnace

- Melting & Holding Furnace 20 Units

◆ Shot Blast Machinery

- Tumbler System (Zinc) 7 Units
- Hanger System (Zinc) 3 Units

◆ Machining

- CNC Lathe 22 Units
- Machining Center 20 Units
- Multi-Spindle Tapping Machine 1 Unit
- Drilling Machine 3 Units
- Involute Spline Broach Machine 1 Unit
- Washing Machine 4 Units



Toshiba Machine



◆ Instrument For Inspection

- CMM 3 Units
- Optical Emission Spectrometer 1 Unit
- Contour Recorder 1 Unit
- Surface Tester 1 Unit
- Universal Strength Tester 1 Unit
- Hardness Tester 1 Unit
- X-Ray Machine 1 Unit
- Simulation Program 1 Unit

◆ Die Maintenance

- Argon Welding Machine 1 Unit
- Electric Welding Machine 2 Units
- Multi Purpose Lathe 2 Units
- Multi Purpose Milling Machine 2 Units
- Upright Drilling Machine 2 Units
- Laser Welding Machine 1 Unit

Products

AUTOMOTIVE PARTS



FRAME END REAR



FRAME DRIVE END



HOUSING STARTER



BRKT TRNS MTG



HOLDER SIDE ENG MTG



HOLDER TRNS MTG



TUBE CONNECTOR



OUTER



GUIDE STEERING RACK



WATER PUMP CASE



CYLINDER



BODY OIL PUMP

MOTORCYCLE PARTS



HOUSING STARTER



FRAME STARTER END

OTHERS PARTS



PISTON



RADIATOR



HEAT SINK

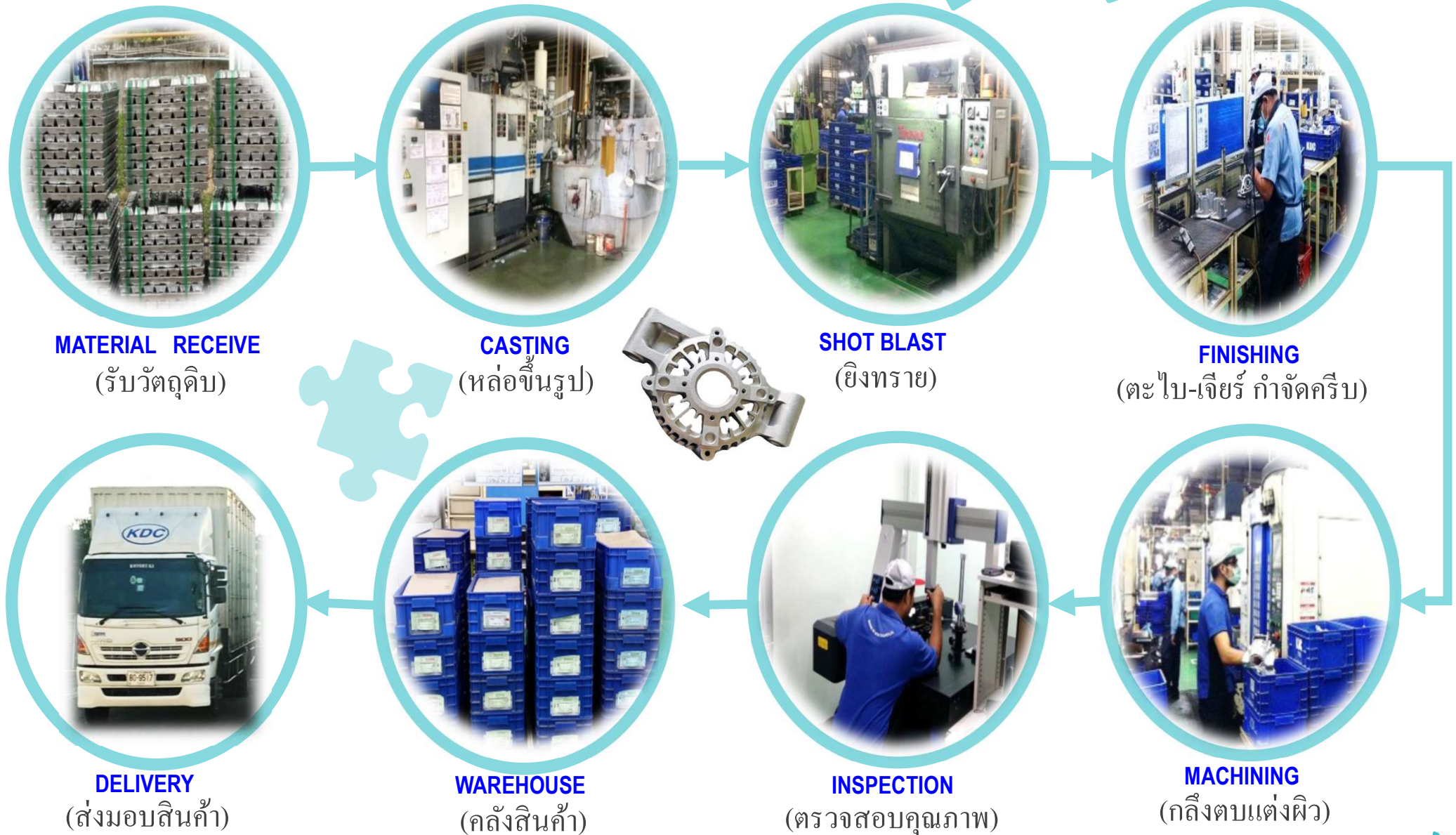


BRACKET CLAMP



HANDLE TILLER

Process Chart



Our Customers



TOYOTA TSUSHO (THAILAND)
TOYOTA TSUSHO THAI HOLDINGS



Astemo
Advanced Sustainable Technologies for Mobility



Alternator



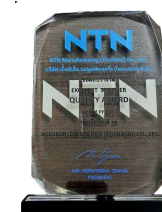
Starter



Starter



Starter



Our Suppliers

Material Suppliers

- ❖ Daiki Aluminium Industry (Thailand) Co.,Ltd.
- ❖ Siam Anglo Alloy Co.,Ltd.
- ❖ Metalcom Co.,Ltd.
- ❖ Nikkei MC Aluminium (Thailand) Co.,Ltd.



Spec Ingot :

- Aluminium Alloy Ingot ADC-12
- Aluminium Alloy Ingot ADC-3
- Aluminium Alloy Ingot DIK365
- Primary Aluminium Alloy Ingot DADC24Z

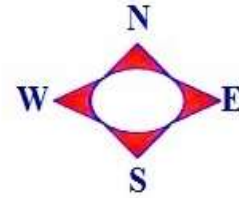


Mold Suppliers

- ❖ DENSO Innovative Manufacturing Solution Asia Co., Ltd.
- ❖ Kato Tool & Die Co., Ltd.
- ❖ U Mold (Thailand) Co., Ltd.
- ❖ Chalita Seimitsu Co., Ltd.
- ❖ Kikuchi Kanagata (Thailand) Co., Ltd.

Map & Contact detail

KOTOBUKI DIE CASTING (THAILAND)CO.,LTD. MAP



ติดต่อ	Contact Detail
ฝ่ายขาย	
	036-812678-82 ต่อ 233 09-8248-3351
	sales@kotobuki.co.th
ฝ่ายบุคคล	
	036-812678-82 ต่อ 230
	personnel@kotobuki.co.th
แฟกซ์	036-812900